

fi-4340C
 IMAGE SCANNER
 ILLUSTRATED PARTS CATALOGUE

05	Oct.30.03	T. Anzai	H.Hasegawa	See revision record in page 2	TITLE fi-4340C Image Scanner Illustrated Parts Catalogue Draw No. P4PA03277-B00X/6 PFU LIMITED	1/19	
04	Apr.22.03	T. Anzai	H.Hasegawa	See revision record in page 2			
03	Jan.09.02	T. Anzai	H.Hasegawa	See revision record in page 2			
02	Dec.14.01	T. Anzai	H.Hasegawa	See revision record in page 2			
Rev.	Date	DESIGN	Appt.	Description			
Date	Nov. 22, 01	DESIGN	T. Anzai	Check	T. Anzai	Appt.	H.Hasegawa

REVISION RECORD		
Edition	Data published	Revised contents
01	November, 2001	First edition
02	December, 2001	Page 14, 15 and 16 Page 13, 14 and 15 revised 05
03	January, 2002	Page 7, 14 and 15 Page 6, 13 and 14 revised 05
04	April, 2003	Page 7 Page 6 revised 05
05	October, 2003	Page 2 (blank page) removed and the total page changed to 19. Revision contents changed (page numbers changed) Page 3 modified (page numbers changed) Page 6 (P/N corrected)

The contents of this manual is subject to change without prior notice.

All Right Reserved. Copyright © 2001, 2002, 2003 PFU LIMITED

05	Oct.30.03	T. Anzai	H. Hassegawa	See revision record in page 2	TITLE
04	Apr.22.03	T. Anzai	H. Hassegawa	See revision record in page 2	If-4340C Image Scanner Illustrated Parts Catalogue
03	Jan.09.02	T. Anzai	H. Hassegawa	See revision record in page 2	Draw No. P4PA03277-B00X/6
02	Dec.14.01	T. Anzai	H. Hassegawa	See revision record in page 2	
Rev.	Date	DESIGN	Appr.	Description	
Date	Nov. 22, 01	DESIGN	T. Anzai	Check	PFU LIMITED
			Appr.	H. Hassegawa	2/19

HOW TO USE THIS MANUAL

ILLUSTRATION

The illustration gives an exploded view of an assembly, and separate parts and how they fit together. Each part has a number corresponding to an Index No. on the parts list.

PARTS LIST

(1) INDEX NO.

The number which corresponds with a parts number in the illustration.

- When the mark ‘*’ precedes the index number, the parts is a Recommended Spare Parts or a Consumables.
- When a ‘-’ is given in this column, the part (screw or washer) is not shown in the illustration.
- When blank, and the QUANTITY and SPECIFICATION are given, a whole of that part is not shown in the illustration or that part is illustrated for detail breakdown in the other page.

(2) COMPOSITION & QUANTITY

This column shows the relationship among units, assemblies, subassemblies, and parts. A unit indicated in a column is assembled by the parts or units indicated in the next right column. The figure is the quantity of the parts needed to assemble into the higher assembly.

(3) SPECIFICATIONS

This column shows part number of the units, or parts.

(4) DESCRIPTION

The part name, applicable device number, and other information are given in this column.

OTHERS

The parts other than the parts marked with ‘*’ in INDEX NO. column are listed in SPARE PARTS LIST REPAIR.

05	Oct.30.03	T. Anzai	H.Hasegawa	See revision record in page 2	TITLE	
04	Apr.22.03	T. Anzai	H.Hasegawa	See revision record in page 2	fr-4340C Image Scanner Illustrated Parts Catalogue	
03	Jan.09.02	T. Anzai	H.Hasegawa	See revision record in page 2	Draw No.	
02	Dec.14.01	T. Anzai	H.Hasegawa	See revision record in page 2	P4PA03277-B00X/6	
Rev.	Date	DESIGN	Appr.	Description		
Date	Nov. 22, 01	DESIGN	T. Anzai	Check	Appr.	H.Hasegawa
					PFU LIMITED	3/19

CONTENTS

A. fi-4340C

	Page
FIGURE 1 FINAL ASSEMBLY-1	5
FIGURE 2 FINAL ASSEMBLY-2	7
FIGURE 3 PLATE & PCA ASSEMBLY	9
FIGURE 4 CARRIER UNIT	11
FIGURE 5 ADF ASSEMBLY	13
FIGURE 6 OPTICAL UNIT	15

B. LIST OF STANDARD FASTENERS

TABLE B.1 LIST OF THE FASTENER	17
FIGURE B.1 TP SCREW	17
FIGURE B.2 MACHINE SCREW WITH WASHER	17
FIGURE B.3 FLAT HEAD SCREW	18
FIGURE B.4 RETAINING RING (E-RING)	18
FIGURE B.5 TP SCREW	18
FIGURE B.6 TUMB SCREW	18
FIGURE B.7 SCREW	19
FIGURE B.8 NYLON BAND	19

05	Oct.30.03	T. Anzai	H.Hasegawa	See revision record in page 2	TITLE fi-4340C Image Scanner Illustrated Parts Catalogue
04	Apr.22.03	T. Anzai	H.Hasegawa	See revision record in page 2	
03	Jan.09.02	T. Anzai	H.Hasegawa	See revision record in page 2	
02	Dec.14.01	T. Anzai	H.Hasegawa	See revision record in page 2	
Rev.	Date	DESIGN	Appr.	Description	
Date	Nov. 22, 01	DESIGN	T. Anzai	Check	PFU LIMITED
			Appr.	H.Hasegawa	4/19

FIGURE 1. FINAL ASSEMBLY-1

Date	Rev.	DESIGN	DESIGN	Check	Appr.	Appr.	Appr.	TITLE
Nov. 22, 01	Date	DESIGN	DESIGN	Description	T. Anzai	H. Hasegawa	H. Hasegawa	ft-4340C Image Scanner Illustrated Parts Catalogue
	02	T. Anzai	H. Hasegawa	See revision record in page 2				Draw No. P4PA03277-B00X/6
	03	T. Anzai	H. Hasegawa	See revision record in page 2				
	04	T. Anzai	H. Hasegawa	See revision record in page 2				
	05	T. Anzai	H. Hasegawa	See revision record in page 2				
								PFU LIMITED
								5/19

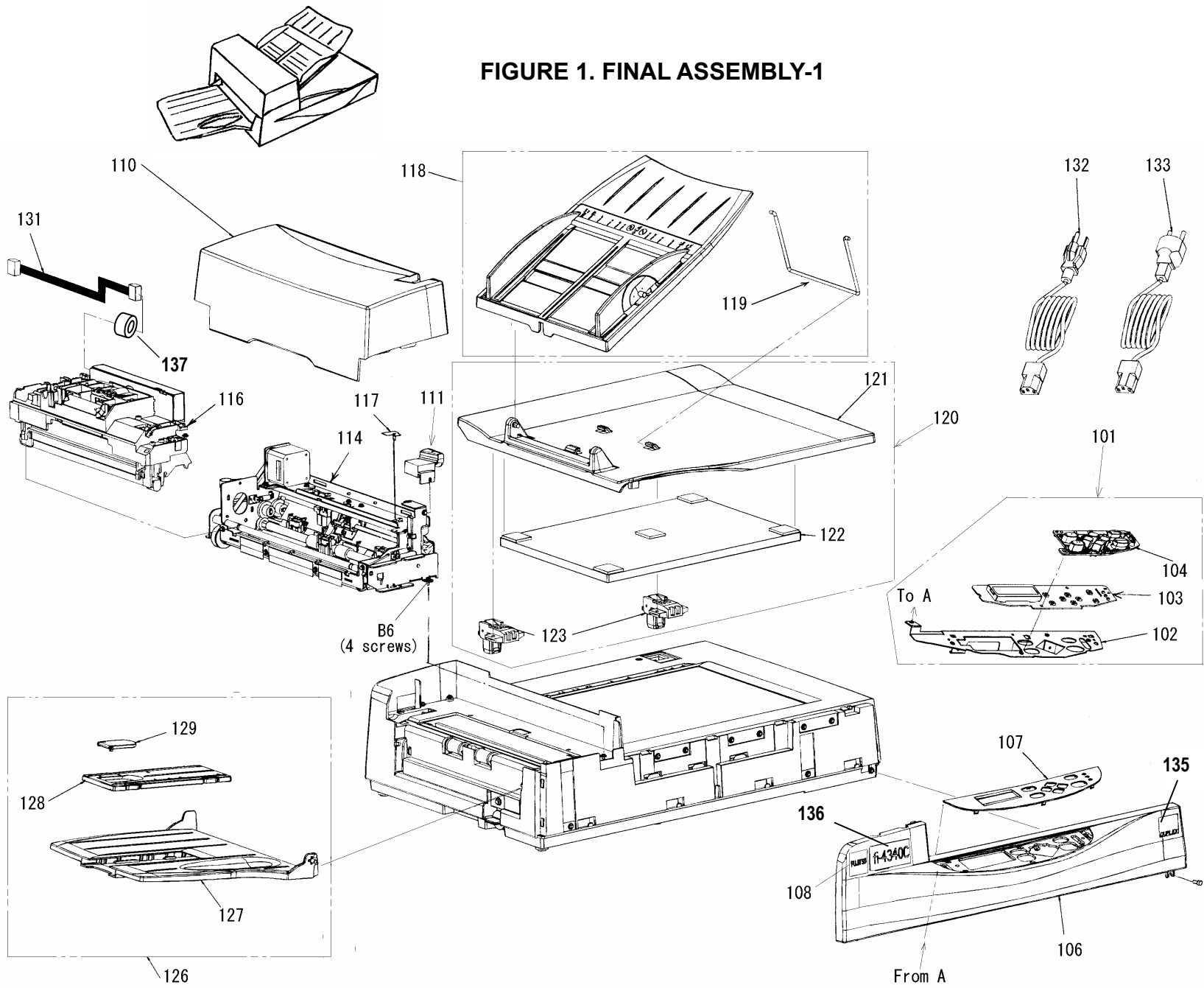


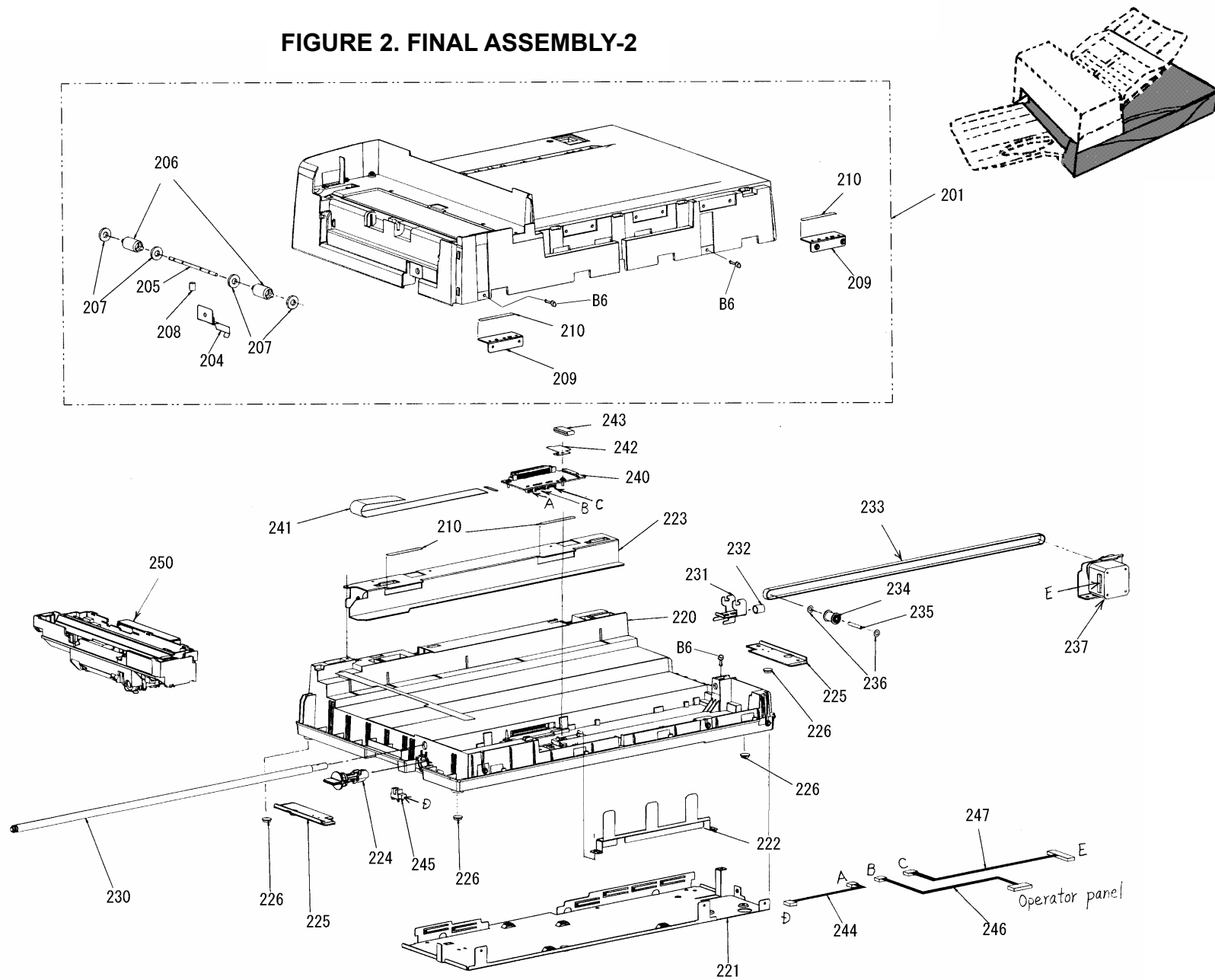
FIGURE 1. FINAL ASSEMBLY-1

INDEX NO.	CONPOSITION & QUANTITY			SPECIFICATION	DESCRIPTION
*101	1			PA03277-D037	CONSOLE UNIT
102	1			PA03277-Y017	LCD PLATE
103	1				
104	1			PA03277-F010	OP ASSY
106	1			PA03277-Y016 PA03277-Y090	FRONT COVER
*107	1			PA03277-D044	LCD COVER
108	1			PA93001-Y577	DESIGN NAMEPLATE
110	1			PA03277-Y245	ADF COVER
111	1			PA03277-Y246	ADF CAP
*114	1			PA03277-D020	ADF UNIT
*116	1			PA03277-D022	OPTICAL UNIT B
117	1	1		PA03277-Y517	RV SPRING
*118	1			PA03277-D024	CHUTE UNIT
119	1	1		PA03277-Y608	CRANK SHAFT
*120	1	1		PA03277-D025	DUCUMENT COVER
121				PA03277-Y615	DOCUMENT COVER
122				PA03277-Y616	CUSHION
<u>03</u> 122		-		PA03277-D047 PA03277-Y623	CUSHION B (*1)
123	2			PA03277-E600	HINGE ASSY
*126	1			PA03277-D041	STACKER
127	1			PA03277-Y610	STACKER
128	1			PA03277-Y611	EXTENSION
129	1			PA03277-Y612	STOPPER
131	1			PA70002-0810	CCD HARNESS
132	1			PA98201-0185	AC CABLE 100V
133	1			PA98201-0186	AC CABLE 200V
135	1			PA93004-Y326	DUPLEX SEAL
136	1			PA03277-Y080	LOGO LABEL
137	1			PA53003-0162	CORE

03 *1: This part is not a standard part but a special part for black background

05	Oct.30.03	T.Anzai	H.Hasegawa	See revision record in page 2	TITLE
04	Apr.22.03	T.Anzai	H.Hasegawa	See revision record in page 2	fi-4340C Image Scanner
03	Jan.09.02	T.Anzai	H.Hasegawa	See revision record in page 2	Illustrated Parts Catalogue
02	Dec.14.01	T.Anzai	H.Hasegawa	See revision record in page 2	Draw No. P4PA03277-B00X/6
Rev.	Date	DESIGN	Appr.	Description	PFU LIMITED
		DESIGN	Appr.		
Date	Nov. 22, 01	DESIGN	T. Anzai	Check	6/19

FIGURE 2. FINAL ASSEMBLY-2



05	Oct.30.03	T.Anzai	H.Hasegawa	See revision record in page 2	TITLE	
04	Apr.22.03	T.Anzai	H.Hasegawa	See revision record in page 2	ft-4340C Image Scanner	
03	Jan.09.02	T.Anzai	H.Hasegawa	See revision record in page 2	Illustrated Parts Catalogue	
02	Dec.14.01	T.Anzai	H.Hasegawa	See revision record in page 2	Draw No.	
	Nov.22.01	T.Anzai	H.Hasegawa	Description	P4PA03277-B00X/6	
		DESIGN	DESIGN	Check	PFU LIMITED	7/19

FIGURE 2. FINAL ASSEMBLY-2

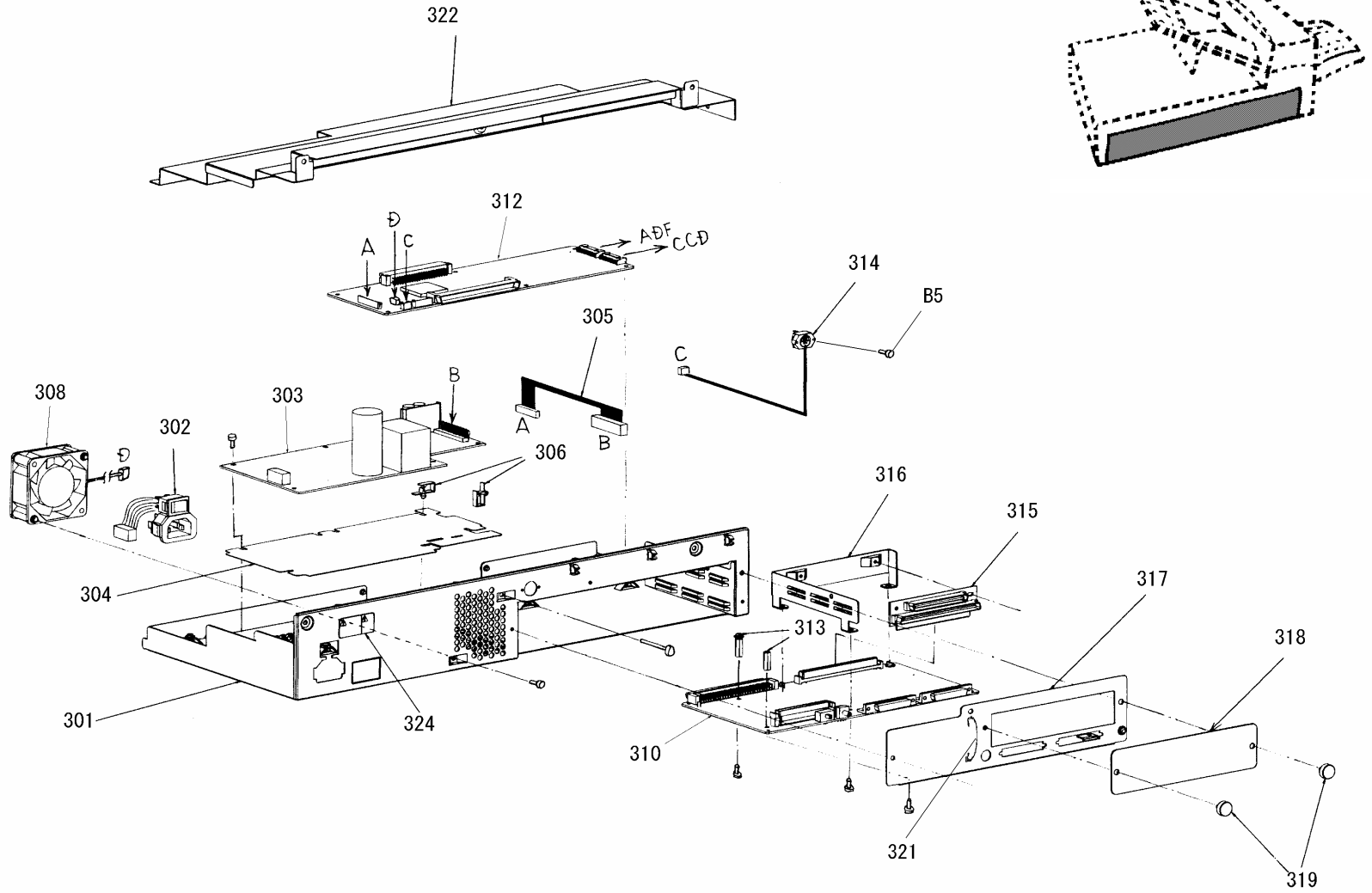
INDEX NO.	CONPOSITION & QUANTITY				SPECIFICATION	DESCRIPTION
201	1				PA03277-D002	COVER UNIT
204	1				PA03277-Y113	CR FG
205	1				PA03277-Y239	PINCH SHAFT
206	2				PA03237-Y612	ROLLER
207	4				PA03277-Y251	HK RING A4C
208	1				PA02212-Y009	EJECT SPRING
209	2				PA03277-Y062	GLASS SUPPORT
210	2				PA03277-Y112	GLASS SHEET P
220	1				PA03277-Y002	MECHA FRAME
221	1				PA03277-Y110	FG BASE
222	1				PA03277-Y029	FG SPRING LCD
223	1				PA03277-Y004	GUIDE RAIL
210	2				PA03277-Y112	GLASS SHEET P
224	1				PA03277-Y006	CR STOPPER A4C
225	2				PA03277-Y061	PCB GUIDE
226	4				PA03002-Y020	FOOT
230	1				PA03277-Y001	CR SHAFT A4C
231	1				PA03277-Y005	ADJ PLATE A4C
232	1				PA02212-Y005	ADJ SPRING
*233	1				PA03277-D032	CR BELT
234	1				PA02212-Y267	ADJ PULLEY
235	1				PA02212-Y144	ADJ SHAFT
236	2				U98L-2010-0005# 4.0 x 0.5FM	SPACER
*237	1				PA03277-D031	FB MOTOR UNIT
240	1				PA20112-B83X	STELLA-JNT
241	1				PA70002-0811	CR CABLE
242	1				PA03277-Y041	CORE SHEET
243	1				PA53003-0160	CORE
244	1				PA70002-0803	HP-SE HARNESS
245	1				PA98901-0055	SENSOR
246	1				PA70002-0805	CSL HARNESS

FIGURE 2. FINAL ASSEMBLY-2

INDEX NO.	CONPOSITION & QUANTITY				SPECIFICATION	DESCRIPTION
247	1				PA70002-0804	FB HARNESS
*250	1				PA03277-D021	CARRIER UNIT

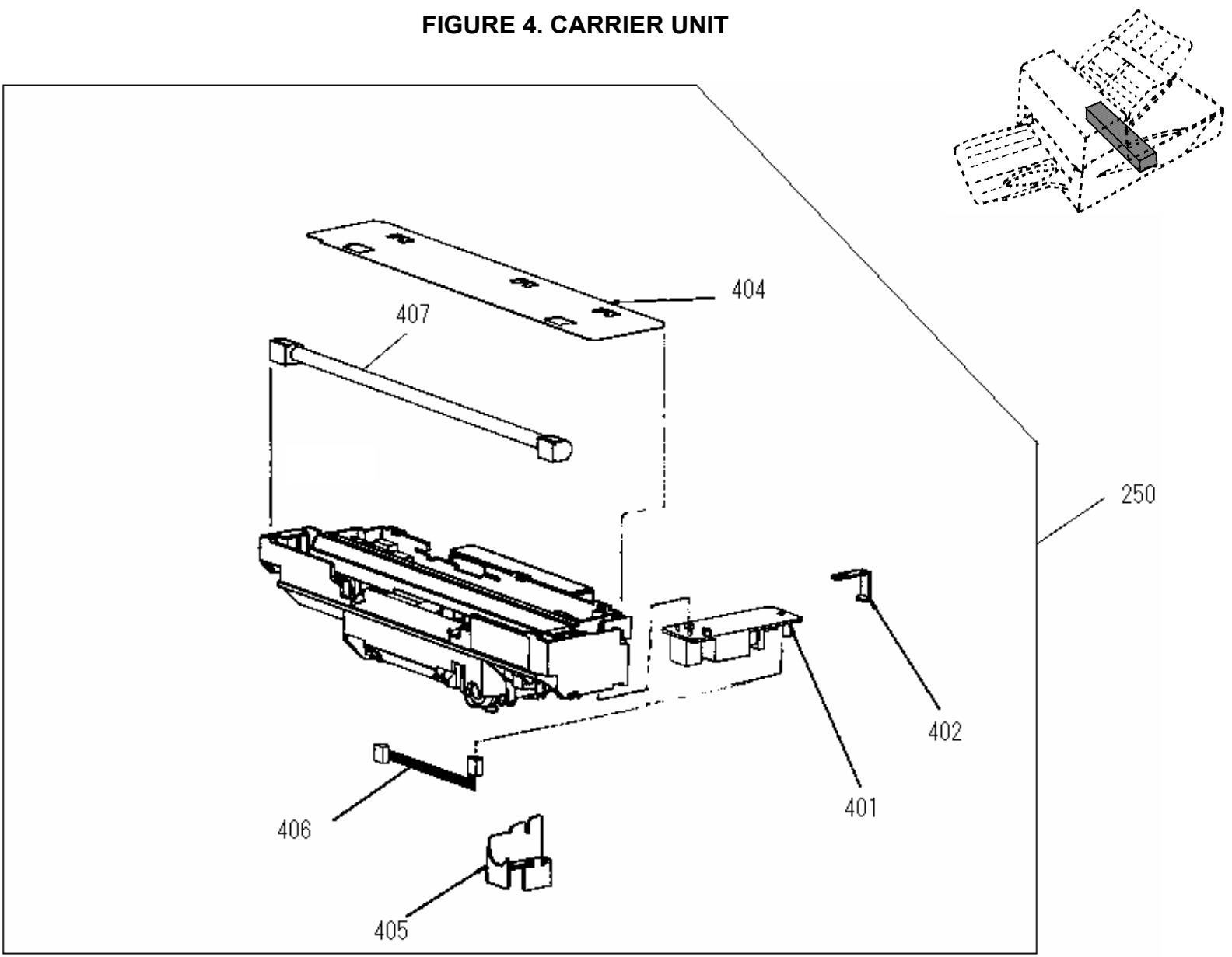
05	Oct.30.03	T.Anzai	H.Hasegawa	See revision record in page 2	TITLE
04	Apr.22.03	T.Anzai	H.Hasegawa	See revision record in page 2	fi-4340C Image Scanner Illustrated Parts Catalogue
03	Jan.09.02	T.Anzai	H.Hasegawa	See revision record in page 2	Draw No.
02	Dec.14.01	T.Anzai	H.Hasegawa	See revision record in page 2	P4PA03277-B00X/6
Rev.	Date	DESIGN	Appr.	Description	PFU LIMITED
Date	Nov. 22, 01	DESIGN	T. Anzai	Check	8/19

FIGURE 3. PLATE & PCA ASSEMBLY



05	Oct. 30, 03	T. Anzai	H. Hasegawa	See revision record in page 2	TITLE
04	Apr. 22, 03	T. Anzai	H. Hasegawa	See revision record in page 2	fi-4340C Image Scanner
03	Jan. 09, 02	T. Anzai	H. Hasegawa	See revision record in page 2	Illustrated Parts Catalogue
02	Dec. 14, 01	T. Anzai	H. Hasegawa	See revision record in page 2	Draw No.
Rev.	Date	DESIGN	Appr.	Description	P4PA03277-B00X/6
Date	Nov. 22, 01	DESIGN	T. Anzai	Appr.	H. Hasegawa
					PFU LIMITED
					9/19

FIGURE 4. CARRIER UNIT



05	Oct.30.03	T. Anzai	H.Hasegawa	See revision record in page 2	TITLE	
04	Apr.22.03	T. Anzai	H.Hasegawa	See revision record in page 2	fi-4340C Image Scanner	
03	Jan.09.02	T. Anzai	H.Hasegawa	See revision record in page 2	Illustrated Parts Catalogue	
02	Dec.14.01	T. Anzai	H.Hasegawa	See revision record in page 2	Draw No. P4PA03277-B00X/6	
Rev.	Date	DESIGN	Appr.	Description		
	Nov. 22. 01	DESIGN	T. Anzai	Check	T. Anzai	Appr.
						H.Hasegawa
					PFU LIMITED	11/19

FIGURE 4. CARRIER UNIT

INDEX NO.	COMPOSITION & QUANTITY				SPECIFICATION	DESCRIPTION
*250		1			PA03277-D021	CARRIER UNIT INVERTER F INV PLATE
*401		1			PA03277-D045	
402		1			PA03277-Y526	
404		1			PA03277-Y514	FB COVER STOP PLATE INV F HARNESS LAMP UNIT F OR B
405		1			PA03277-Y513	
406		1			PA70002-0806	
*407		1			PA03277-D023	

05	Oct. 30. 03	T. Anzai	H. Hasegawa	See revision record in page 2	TITLE	
04	Apr. 22. 03	T. Anzai	H. Hasegawa	See revision record in page 2	fi-4340C Image Scanner Illustrated Parts Catalogue	
03	Jan. 09. 02	T. Anzai	H. Hasegawa	See revision record in page 2		
02	Dec. 14. 01	T. Anzai	H. Hasegawa	See revision record in page 2	Draw No. P4PA03277-B00X/6	
Rev.	Date	DESIGN	Appr.	Description		
Date	Nov. 22. 01	DESIGN	T. Anzai	Check	PFU LIMITED	12/19

05	Oct.30.03	T.Anzaai	H.Hasegawa	See revision record in page 2				TITLE
04	Apr.22.03	T.Anzaai	H.Hasegawa	See revision record in page 2				ff-4340C Image Scanner Illustrated Parts Catalogue
03	Jan.09.02	T.Anzaai	H.Hasegawa	See revision record in page 2				
02	Dec.14.01	T.Anzaai	H.Hasegawa	See revision record in page 2				Draw No. P4PA03277-B00X/6
Rev.	Date	DESIGN	Appr.	Description	Check	Appr.		
	Nov. 22, 01	DESIGN	T. Anzai		T. Anzai	H.Hasegawa		
								PFU LIMITED
								13/19

FIGURE 5. ADF ASSEMBLY

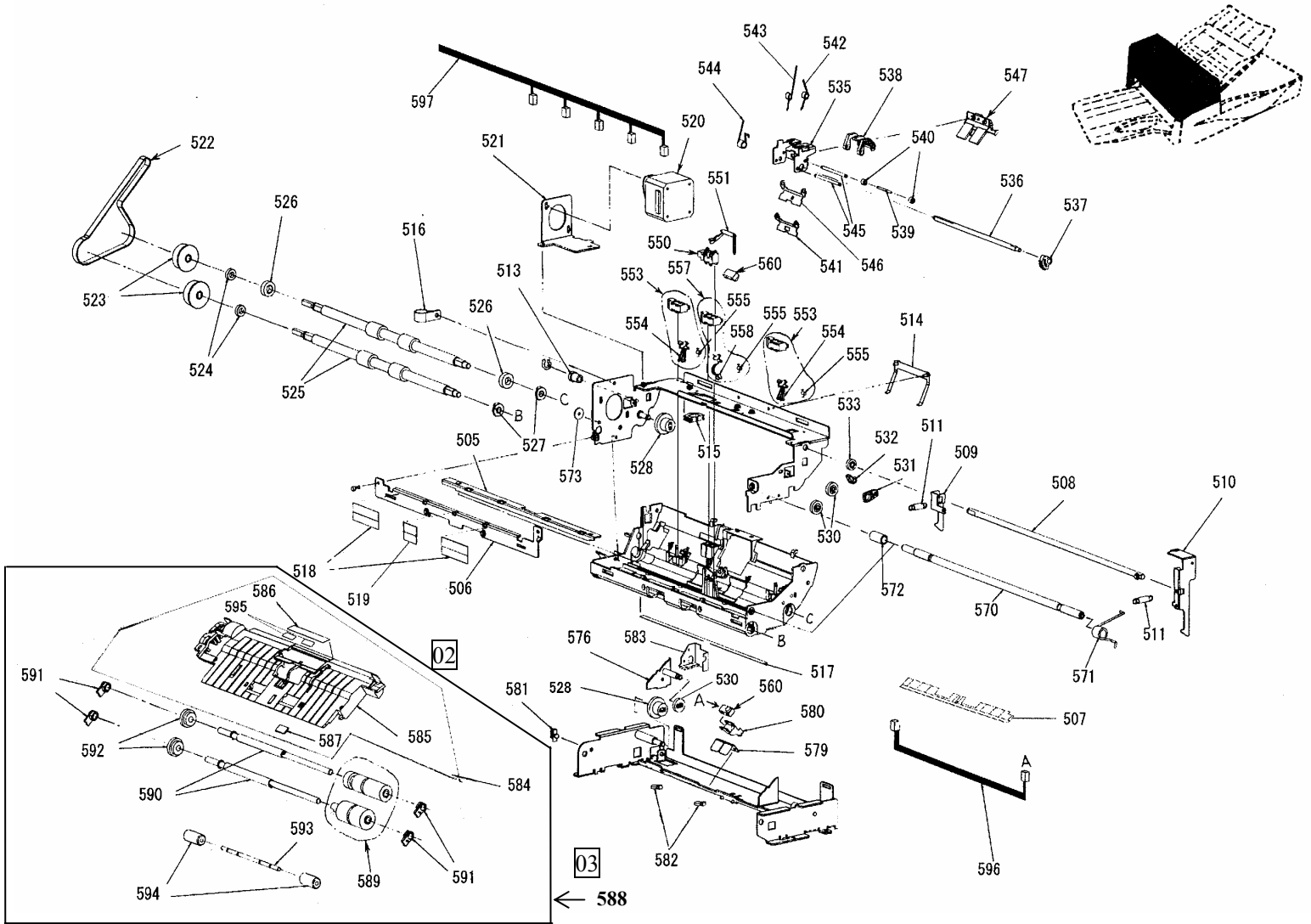


FIGURE 5. ADF ASSEMBLY

INDEX NO.	CONPOSITION & QUANTITY			SPECIFICATION	DESCRIPTION
*114	1			PA03277-D020	ADF UNIT
505	1			PA03277-Y258	GUIDE C PLATE
506	1			PA03277-Y254	ENDOR PLATE
507	1			PA03277-Y259	GUIDE C SHEET
508	1			PA03277-Y215	CANCEL SHAFT
509	1			PA03277-Y217	CANCEL ARM R
510	1			PA03277-Y216	CANCEL ARM F
511	2			PA03277-Y218	CANCEL SPRING
513	1			PA02201-Y549	COLLAR
514	1			PA03277-Y257	PICK SPRING
515	1			CT-EDS-1208U-KG	CLAMP
516	1			RU6NYC15R5	NYLON CLIP
517	1			PA03277-Y256	WHITE SHEET
518	2			PA03277-Y249	J SHEET
519	1			PA03277-Y270	J SHEET S
*520	1			PA03277-D028	ADF MOTOR
521	1			PA03277-Y224	MOTOR PLATE
*522	1			PA03277-D030	ADF BELT
523	2			PA03277-Y203	DRIVE PULLEY
524	2			U30L-8000-0012#6002	BEARING
525	2			PA03277-Y202	DRIVE SHAFT
526	2			PA03277-Y204	ADF DRIVE GEAR
527	2			PA02212-Y052	BUSHING
528	2			U110-8038-Z398	REDUCTION GEAR
530	3			PA03277-Y219	IDLE GEAR
531	1			PA03277-Y221	PLANET FRAME
532	1			PA03277-Y222	PLANET SPRING
533	1			PA03277-Y220	PLANET GEAR
535	1			PA03277-Y253	PAD PLATE
536	1			PA03277-Y209	P DRIVE SHAFT
537	1			PA03277-Y210	P DRIVE GEAR
538	1			PA03277-Y205	PICK ARM
539	1			PA03277-Y207	ARM SHAFT
540	2			PA03237-Y206	ARM ROLLER
541	1			PA03277-Y211	PAD PLATE1
542	1			PA03277-Y213	PAD SPRING1
543	1			PA03277-Y214	PAD SPRING2
544	1			PA03277-Y208	PICK SPRING
545	2			PA03277-Y255	PAD SHAFT
546	1			PA03277-Y212	PAD PLATE 2
*547	1			PA03277-0002	PAD ASY

Rev.	Date	DESIGN	Appr.	Check	Appr.	Appr.	Appr.	DATE
02	Dec.14.01	T.Anzai	H.Hasegawa	See revision record in page 2	T.Anzai	H.Hasegawa	P4PA03277-B00X/6	14/19
03	Jan.09.02	T.Anzai	H.Hasegawa	See revision record in page 2				
04	Apr.22.03	T.Anzai	H.Hasegawa	See revision record in page 2				
05	Oct.30.03	T.Anzai	H.Hasegawa	See revision record in page 2				

TITLE	DATE
ft-4340C Image Scanner Illustrated Parts Catalogue	14/19

FIGURE 5. ADF ASSEMBLY

INDEX NO.	CONPOSITION & QUANTITY			SPECIFICATION	DESCRIPTION
*550	1			PA03277-D039	SENSOR EMPTY
551	1			PA03277-Y226	EMPTY ARM
*553	2			PA03277-D042	SENSOR OPEN OR B5
554	2			PA03277-Y227	ACTUATOR
555	2			PA03277-Y228	SENSOR SPRING1
*557	1			PA03277-D043	SENSOR TOP
558	1			PA03277-Y229	TOP ARM
555	1			PA03277-Y228	SENSOR SPRING1
*560	1			PA03277-D038	DF SENSOR SET
570	1			PA03277-Y223	CENTER SHAFT
571	1			PA03277-Y231	CENTER SPRING
572	1			PA03277-Y225	SLIDER
573	1			PA02212-Y076	WASHER
576	1			PA03277-G205	PICK PLATE ASY
579	1			PA03277-Y232	DRIVE SPRING
580	1			PA03277-Y233	SENSOR HOLDER
581	1			PA83952-1101	MINI CLAMP
582	2			RU6NYBT0	NYLON BAND
583	1			PA03277-Y268	FIX GUARD
*588	1			PA03277-D047	GUIDE A UNIT
*584	1			PA03277-D027	GUIDE A UNIT
585	1			PA03277-Y238	GUIDE A
586	1			PA03277-Y241	PICK SHEET
587	1			PA03951-0230	DF GLASS
*589	1			PA03277-0001	PICK ROLLERS
590	2			PA03277-Y236	PICK SHAFT1
591	4			PA03277-Y237	BUSHING
592	2	02		PA03002-Y060	SEPARATION GEAR
593	1			PA03277-Y239	PINCH SHAFT
594	2			PA03277-Y240	ROLLER C
595	2			PA03277-Y263	GUIDE A SHEET
596				PA70002-0808	DF HARNESS
597				PA70002-0809	ADF HARNESS

05	Oct. 30. 03	T. Anzai	H. Hasegawa	See revision record in page 2	TITLE	
04	Apr. 22. 03	T. Anzai	H. Hasegawa	See revision record in page 2	fi-4340C Image Scanner	
03	Jan. 09. 02	T. Anzai	H. Hasegawa	See revision record in page 2	Illustrated Parts Catalogue	
02	Dec. 14. 01	T. Anzai	H. Hasegawa	See revision record in page 2	Draw No.	
Rev.	Date	DESIGN	Appr.	Description	P4PA03277-B00X/6	
Date	Nov. 22, 01	DESIGN	T. Anzai	Check	PFU LIMITED	15/19

FIGURE 6. OPTICAL UNIT

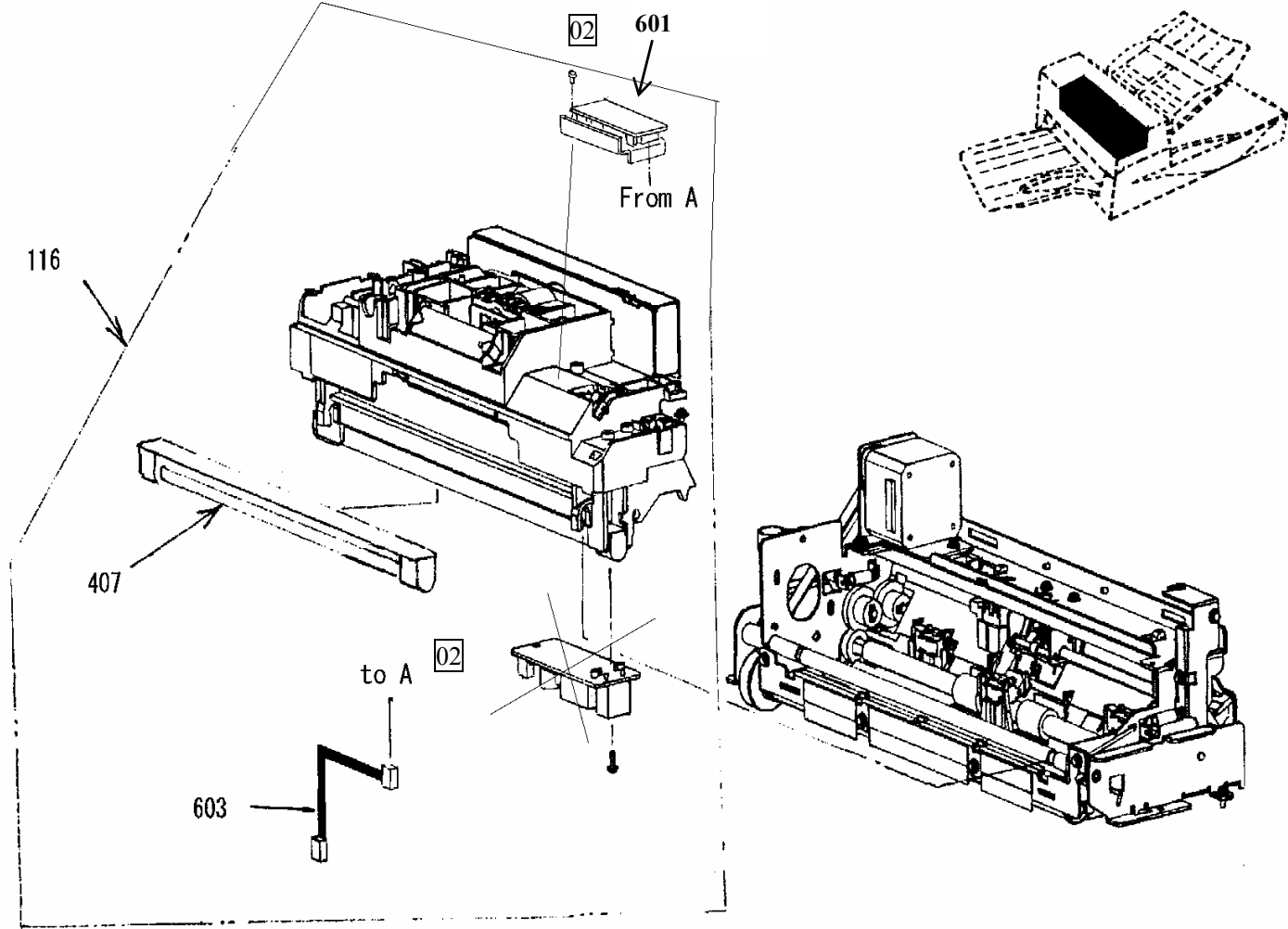


FIGURE 6. OPTICAL UNIT

INDEX NO.	CONPOSITION & QUANTITY				SPECIFICATION	DESCRIPTION
*116	1				PA03277-D022	OPTICAL UNIT INVERTER B LAMP UNIT F OR B
*601	1				PA03277-D046	
*407	1				PA03277-D023	
603	1				PA70002-0807	INVB HARNESS

05	Oct. 30. 03	T. Anzai	H. Hasegawa	See revision record in page 2	TITLE	
04	Apr. 22. 03	T. Anzai	H. Hasegawa	See revision record in page 2	fr-4340C Image Scanner	
03	Jan. 09. 02	T. Anzai	H. Hasegawa	See revision record in page 2	Illustrated Parts Catalogue	
02	Dec. 14. 01	T. Anzai	H. Hasegawa	See revision record in page 2	Draw No.	
Rev.	Date	DESIGN	Appr.	Description	P4PA03277-B00X/6	
Date	Nov. 22, 01	DESIGN	T. Anzai	Check	PFU LIMITED	16/19

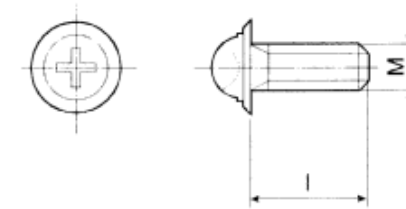
LIST OF STANDARD FASTENERS

The fasteners in the scanner are listed in Table B.1.

Table B.1 LIST OF THE FASTENER

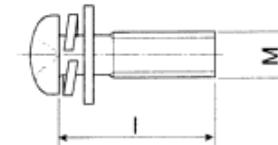
INDEX No.	PARTS NUMBER	DESCRIPTION	FIGURE
B1	U30L-0010-0030#M3x5	TP SCREW M3x5	Fig B.1
B2	U30L-0010-0030#M3x8	TP SCREW M3x8	Fig B.1
B3	U30L-0010-0030#M4x8	TP SCREW M4x8	Fig B.1
B4	RU6SW2N3-06111	MACHINE SCREW W/WASHER M3x6	Fig B.2
B5	RU6SW2N2-08111	MACHINE SCREW W/WASHER M2x8	Fig B.2
B6	RU6SW2N3-14121	MACHINE SCREW W/WASHER M3x14	Fig B.2
B7	RU6SW2N3-30111	MACHINE SCREW W/WASHER M3x30	Fig B.2
B8	RU6SW2N3-08111	MACHINE SCREW W/WASHER M3x8	Fig B.2
B9	RU6SAKT4-04161	FLAT HEAD SCREW M4x4	Fig B.3
B10	RU6ER2-S	E-RING	Fig B.4
B11	RU6ER3-S	E-RING	Fig B.4
B12	RU6ER4-S	E-RING	Fig B.4
B13	RU6ER6-S	E-RING	Fig B.4
B14	PA82900-0163	TP SCREW M4x10	Fig B.5
B15	PA82900-0162	TP SCREW M3x8	Fig B.5
B16	PA82900-0166	TP SCREW M4x8	Fig B.5
B17	U30L-0010-0027#M4x6	THUMB SCREW M4x6	Fig B.6
B18	CA98001-8785	SCREW	Fig B.7
B19	RU6NYBT0	NYLON BAND	Fig B.8

FIGURE B.1 TP SCREW



INDEX No.	PARTS NUMBER	M	I
B1	U3DL-0010-0030#M3x5	3	5
B2	U3DL-0010-0030#M3x8	3	8
B3	U3DL-0010-0030#M4x8	4	8

FIGURE B.2 MACHINE SCREW WITH WASHER

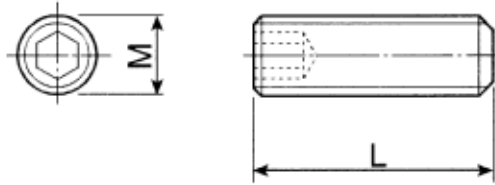


INDEX No.	PARTS NUMBER	M	I
B4	RU6SW2N3-06111	3	6
B5	RU6SW2N3-08111	3	8
B6	RU6SW2N3-14121	3	14
B7	RU6SW2N3-30111	3	30
B8	RU6SW2N4-08111	4	8

05	Oct.30.03	T.Anzai	H.Hasegawa	See revision record in page 2	TITLE fi-4340C Image Scanner Illustrated Parts Catalogue
04	Apr.22.03	T.Anzai	H.Hasegawa	See revision record in page 2	
03	Jan.09.02	T.Anzai	H.Hasegawa	See revision record in page 2	
02	Dec.14.01	T.Anzai	H.Hasegawa	See revision record in page 2	
Rev.	Date	DESIGN	Appr.	Description	
Date	Nov. 22, 01	DESIGN	T. Anzai	Check	PFU LIMITED
			Appr.	H.Hasegawa	17/19

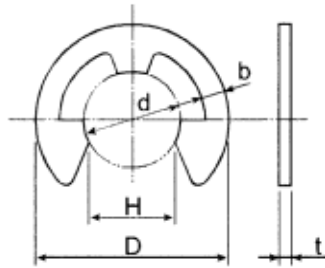
05	Oct.30.03	T.Anzai	H.Hasegawa	See revision record in page 2	TITLE fi-4340C Image Scanner Illustrated Parts Catalogue Draw No. P4PA03277-B00X/6 PFU LIMITED	18/19
04	Apr.22.03	T.Anzai	H.Hasegawa	See revision record in page 2		
03	Jan.09.02	T.Anzai	H.Hasegawa	See revision record in page 2		
02	Dec.14.01	T.Anzai	H.Hasegawa	See revision record in page 2		
Rev.	Date	DESIGN	Appr.	Description		
Date	Nov. 22, 01	DESIGN	T. Anzai	Check	Appr.	H.Hasegawa

FIGURE B.3 FLAT HEAD SCREW



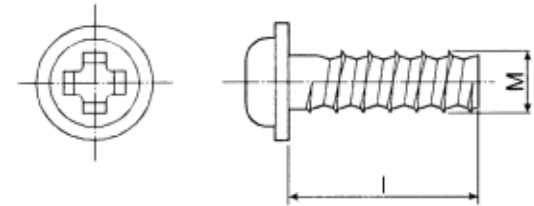
INDEX No.	PARTS NUMBER	M	I
B9	RU6SAKT4-04161	4	4

FIGURE B.4 RETAINING RING (E-RING)



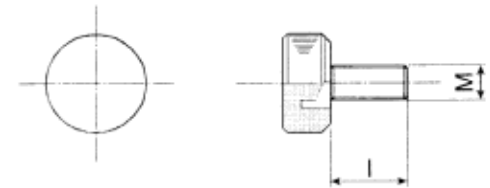
INDEX No.	PARTS NUMBER	D	t	H	t
B10	RU6ER2-S	5	2	1.7	0.4
B11	RU6ER3-S	7	3	2.6	0.6
B12	RU6ER4-S	9	4	3.5	0.6
B13	RU6ER6-S	12	6	5.2	0.8

FIGURE B.5 TP SCREW



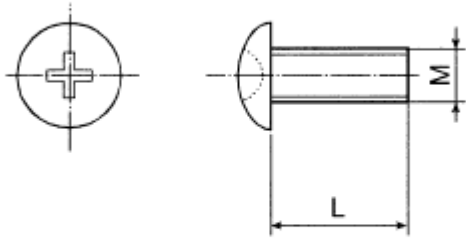
INDEX No.	PARTS NUMBER	M	I
B15	PA82900-0162	3	8
B14	PA82900-0163	4	10
B16	PA82900-0166	4	8

FIGURE B.6 TUMB SCREW



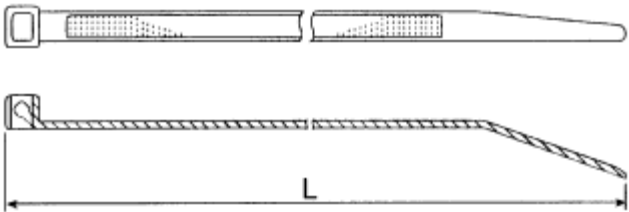
INDEX No.	PARTS NUMBER	M	I
B17	U3DL-0010-0027#M4x6	4	6

FIGURE B.7 SCREW



INDEX No.	PARTS NUMBER	M	L
B18	CA98D01-8785	5.5	5

FIGURE B.8 NYLON BAND



INDEX No.	PARTS NUMBER	L
B19	RU6NYBT0	92±2

05	Oct.30.03	T.Anzai	H.Hasegawa	See revision record in page 2	TITLE	
04	Apr.22.03	T.Anzai	H.Hasegawa	See revision record in page 2	ft-4340C Image Scanner	
03	Jan.09.02	T.Anzai	H.Hasegawa	See revision record in page 2	Illustrated Parts Catalogue	
02	Dec.14.01	T.Anzai	H.Hasegawa	See revision record in page 2	Draw No.	
Rev.	Date	DESIGN	Appr.	Description	P4PA03277-B00X/6	
Date	Nov. 22, 01	DESIGN	T. Anzai	Check	PFU LIMITED	19/19